

# FOYER + KITCHEN - WEST ELEVATION



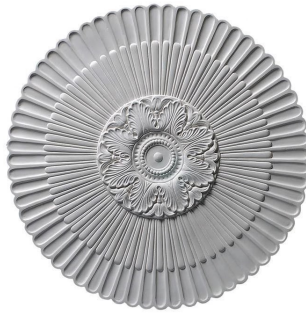
foyer chandelier



range sconces



foyer medallion



range flush mounts



kitchen flush mounts



## FOYER + KITCHEN - WEST ELEVATION



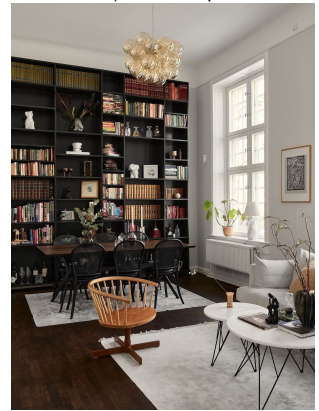
cabinet/range hood molding

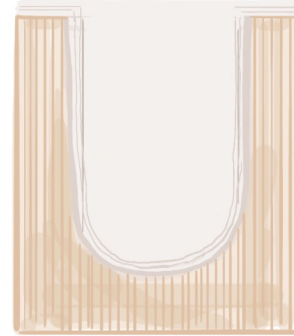


cabinet style inspo



foyer feel inspo







# KITCHEN - SOUTH ELEVATION





# KITCHEN - SOUTH ELEVATION



cabinet facing details

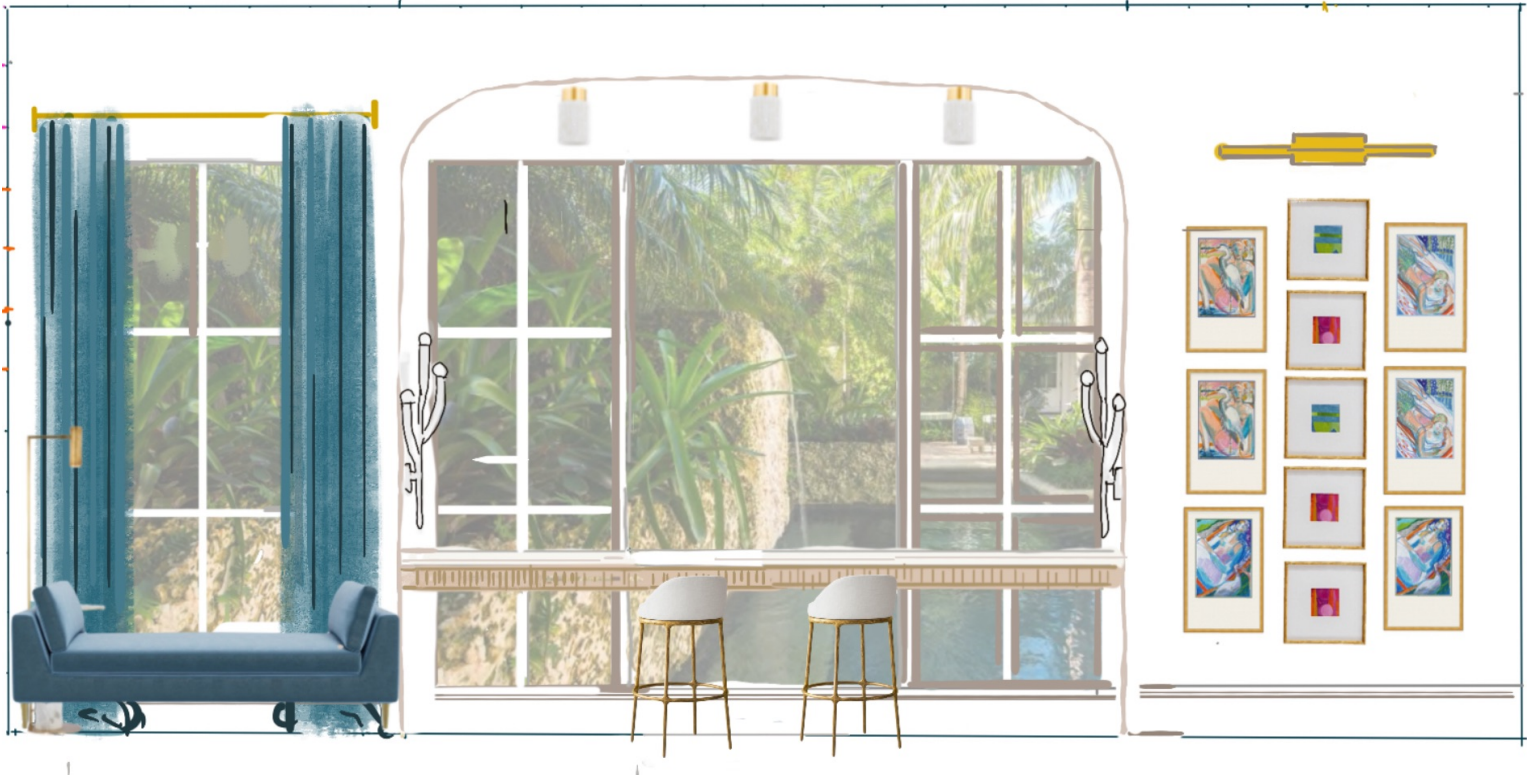


stone workspace insert style

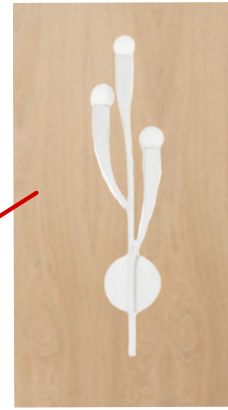
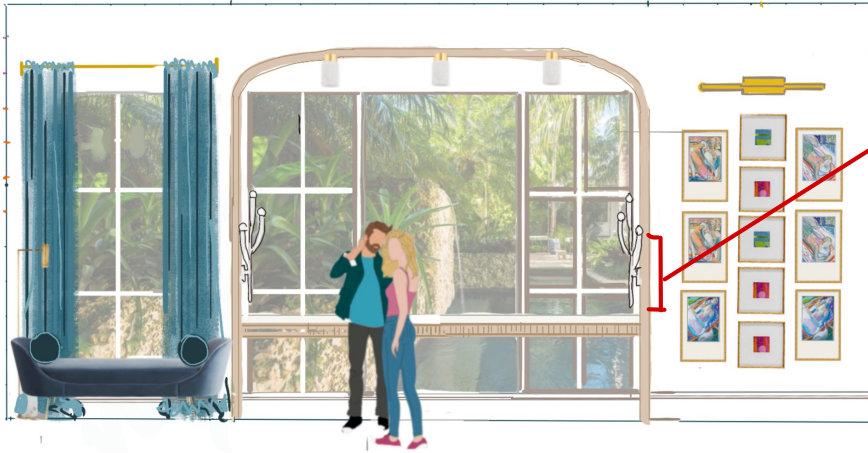


cabinet inspo

## KITCHEN - EAST ELEVATION



courtyard kitchen bumpout elevation  
(with trimmed alcove)

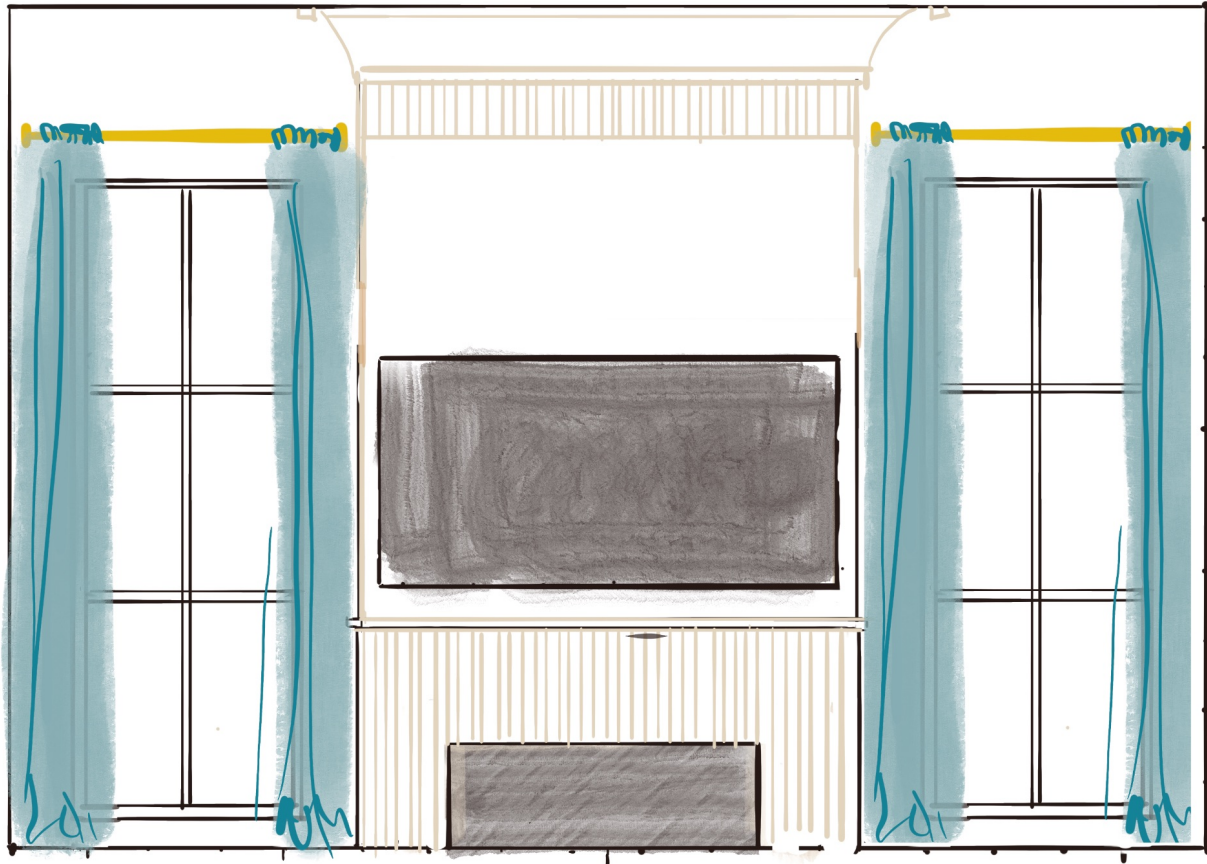


courtyard kitchen bumpout elevation  
(with drywall alcove)

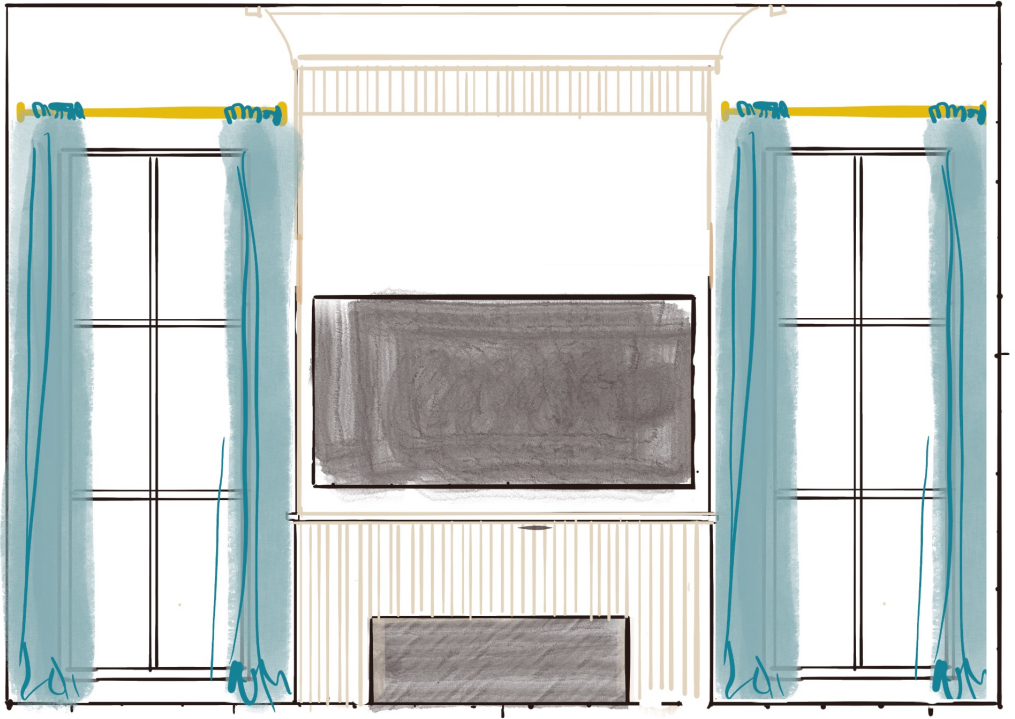




# LIVING ROOM - WEST ELEVATION



## LIVING ROOM - WEST ELEVATION

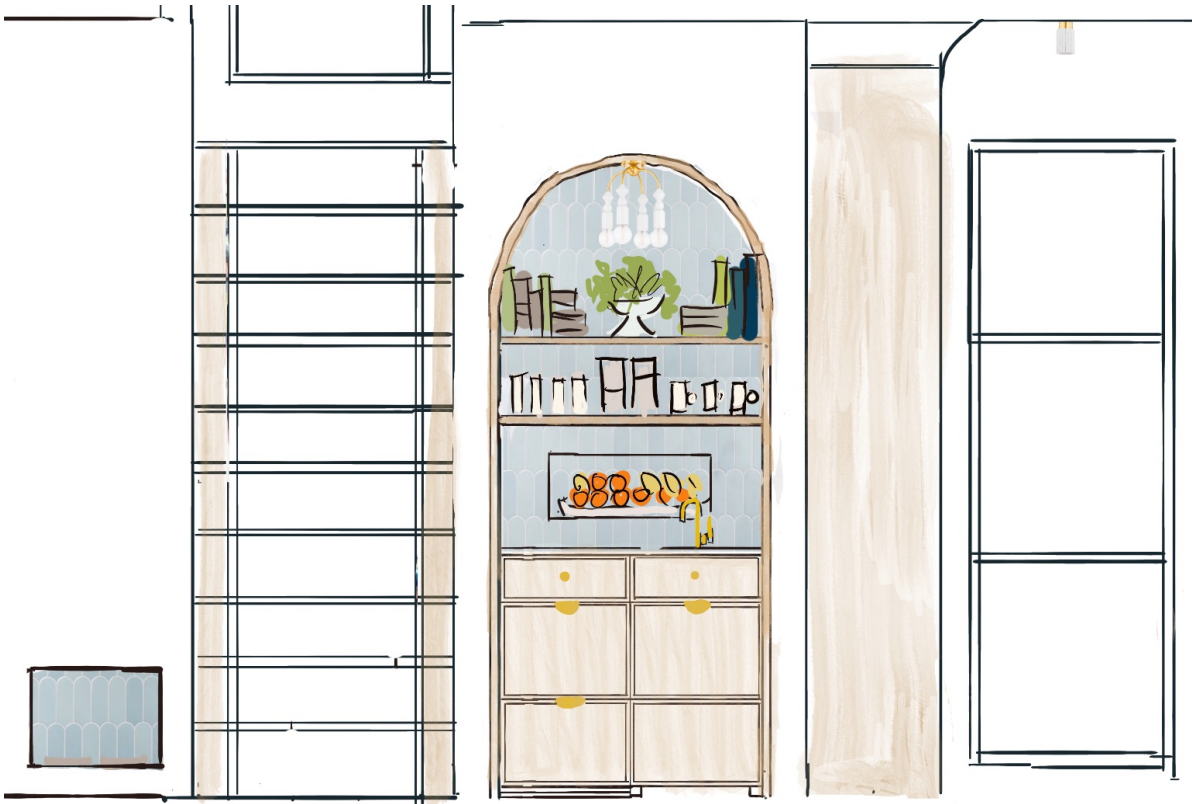


plaster fireplace surround inspo



repeat crown/fluting detail from range hood and hall staircases

# JUICE BAR + STAIRCASE - WEST ELEVATION





JUICE BAR + STAIRCASE - WEST ELEVATION



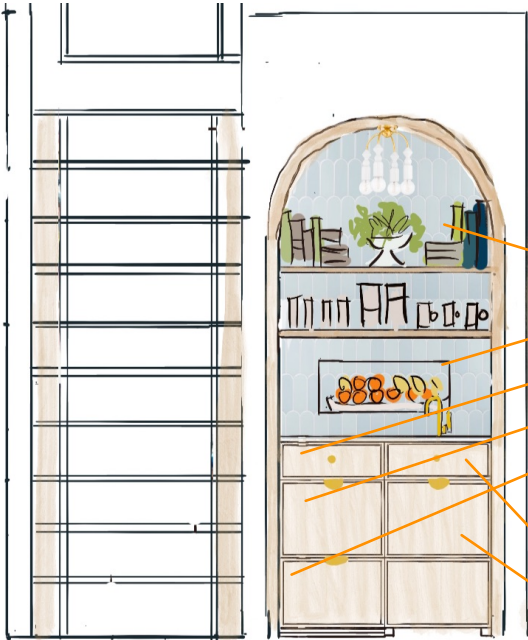
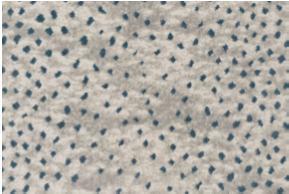
staircase chandelier



staircase damask wallpaper



staircase landings sconces



recessed fruit alcove insp  
(makes pretty decorative focal point for fruit bowl and prevents it from taking up important counter space)



white oak recessed trimmed alcove insp

shelves for coffee mugs, glassware, and canisters of coffee + tea

recessed alcove for fresh fruit

layered drawer for keurigs and accessories

24" panel-ready fridge drawer

24" panel-ready freezer w/ice maker

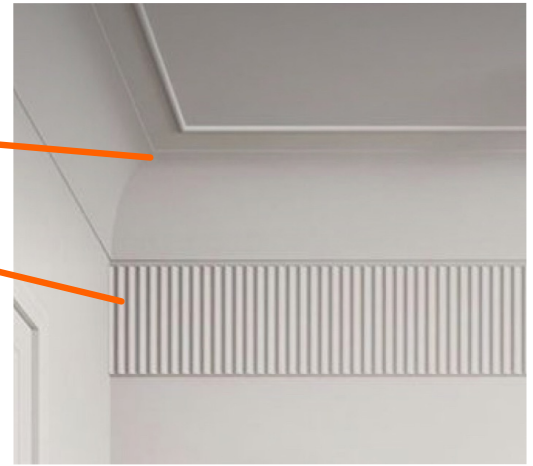
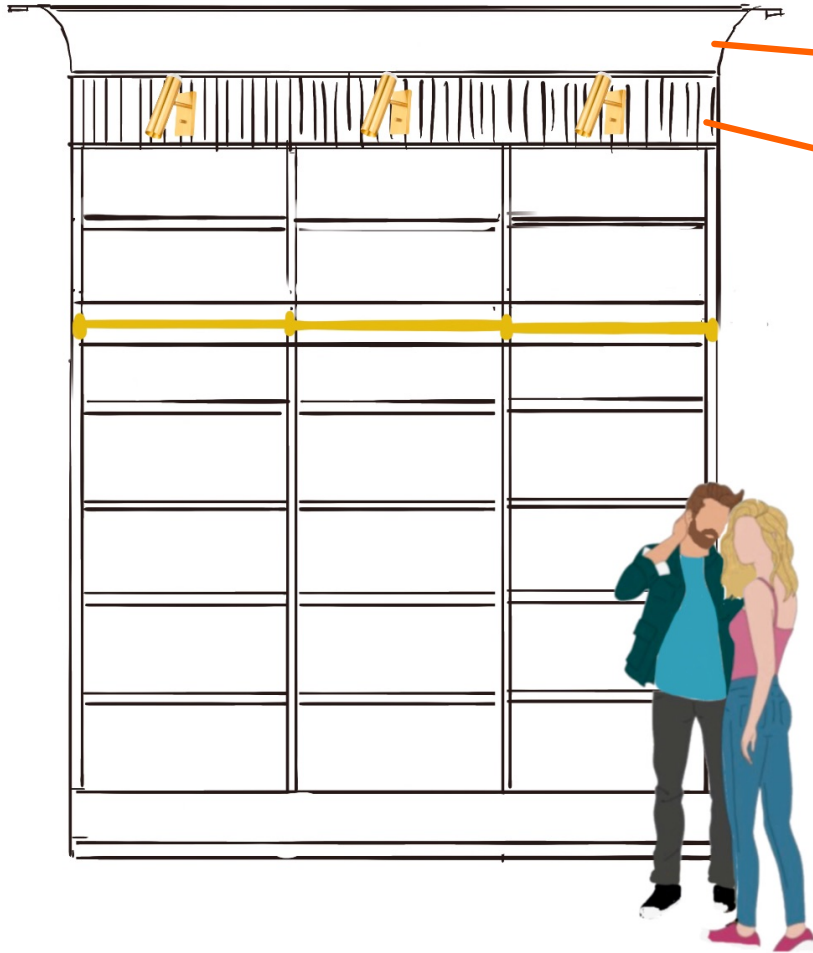
-false front for sink

-trash pull (made to match drawers on face)

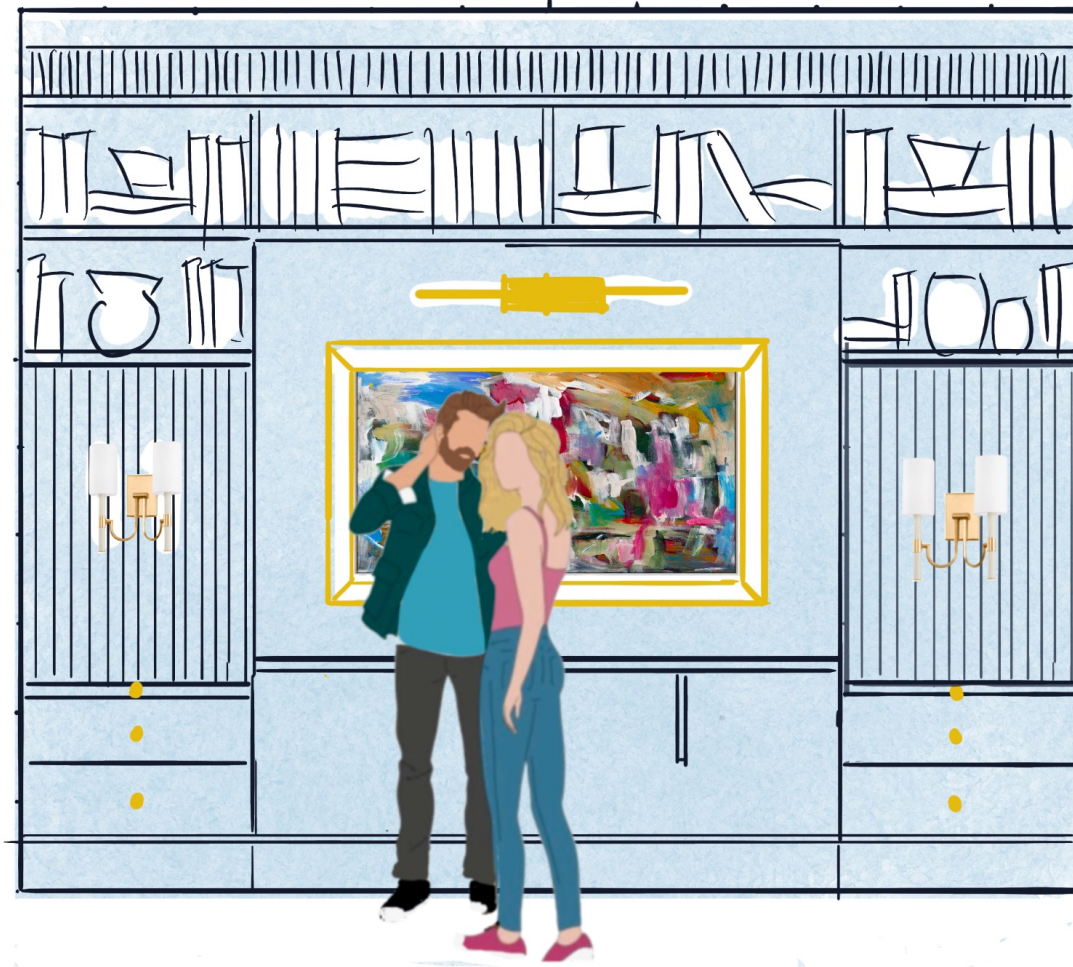


drawer face detail insp

## HALL BOOKCASES X 3

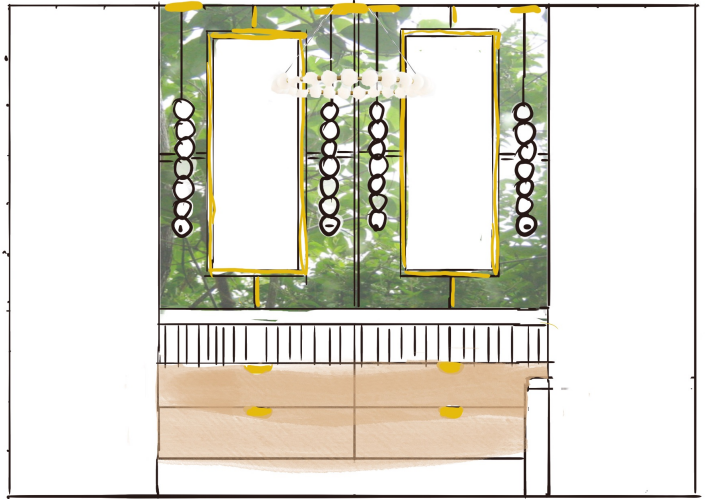
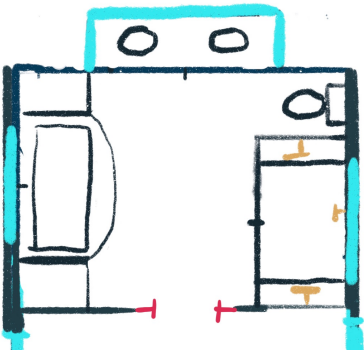


OFFICE - WEST WALL ELEVATION

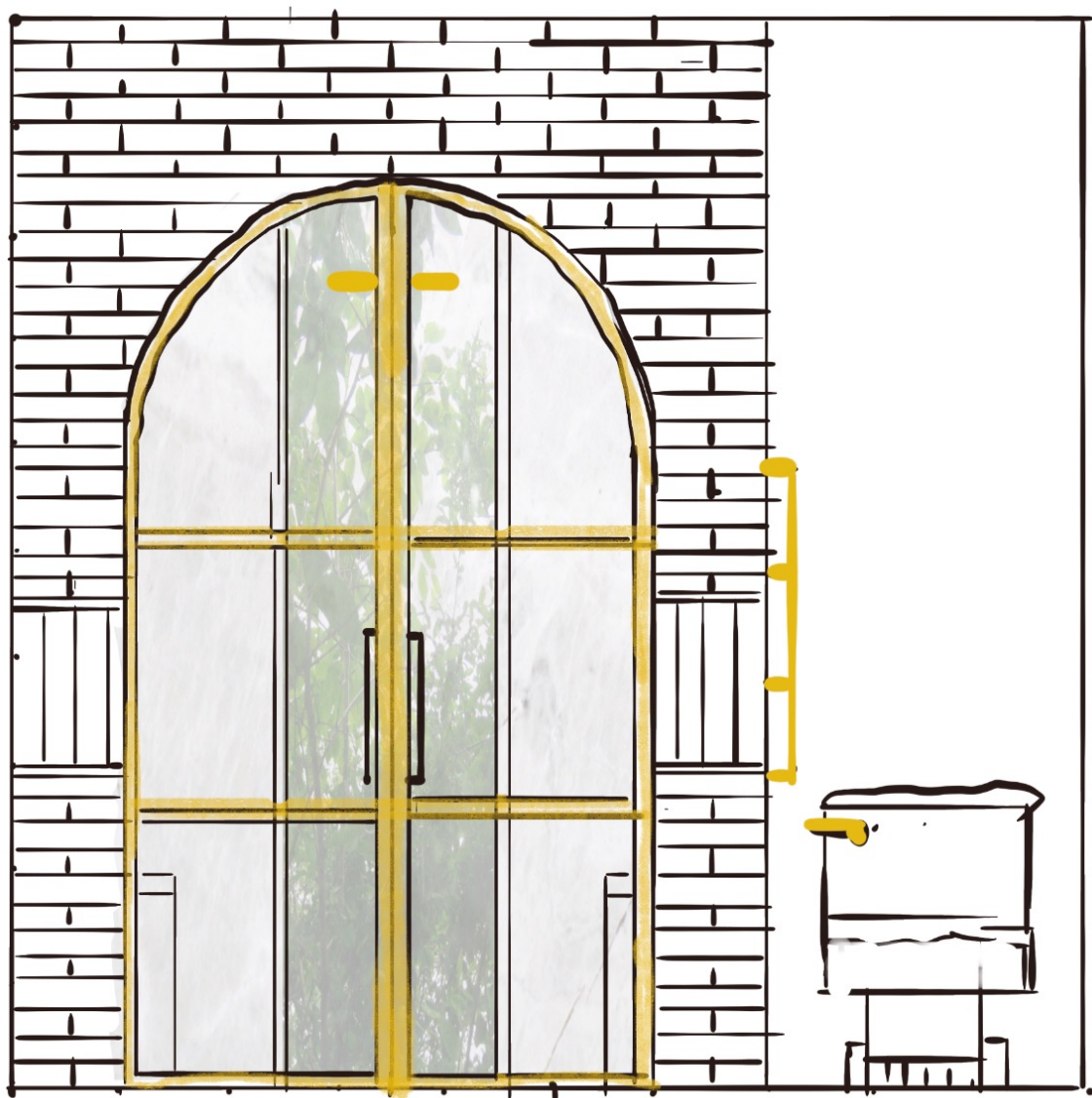




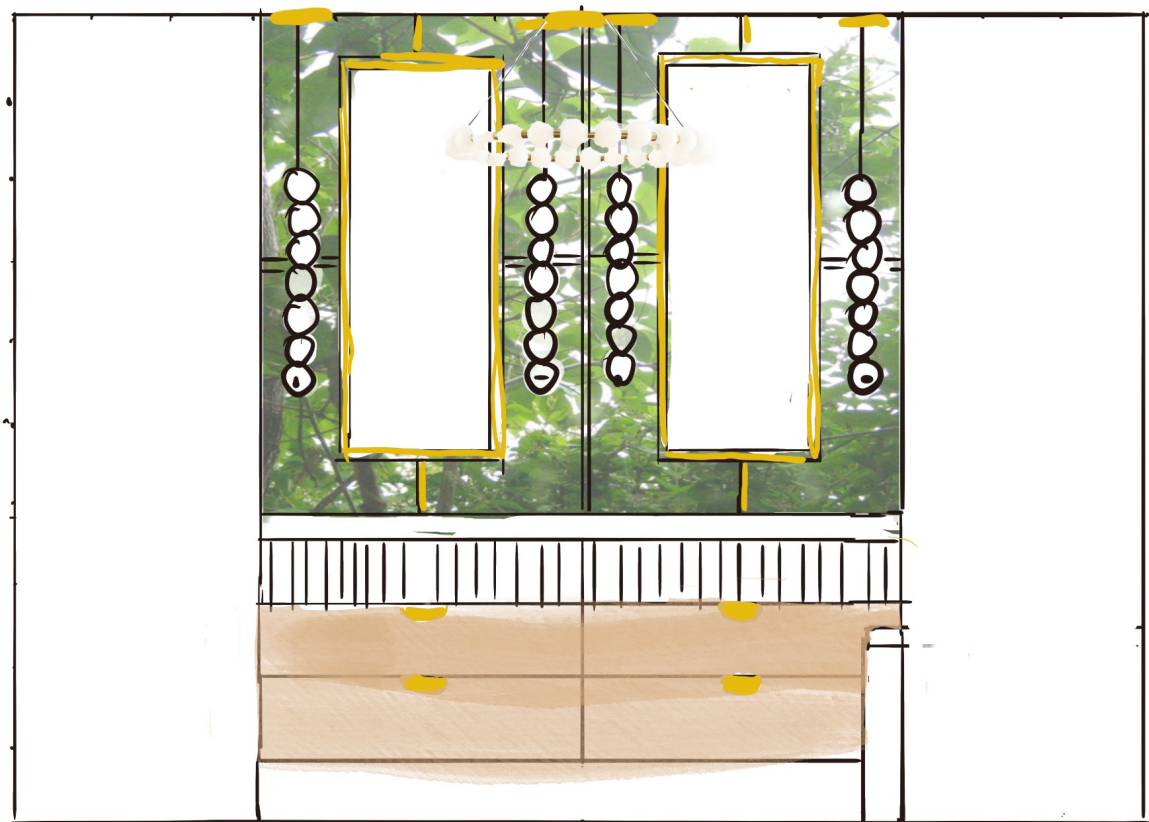
# MASTER BATHROOM

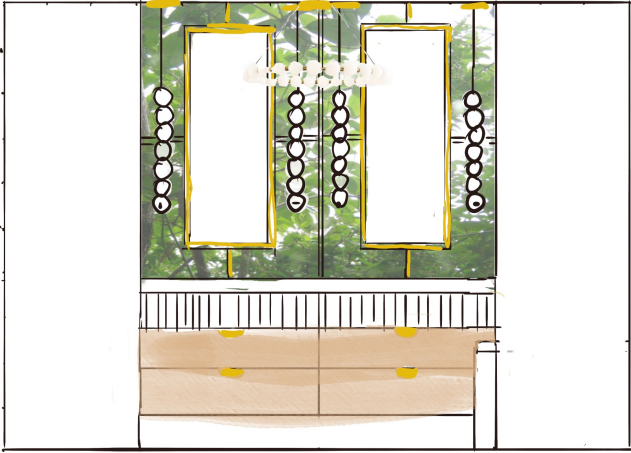


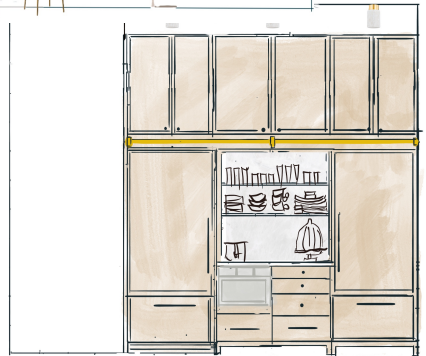
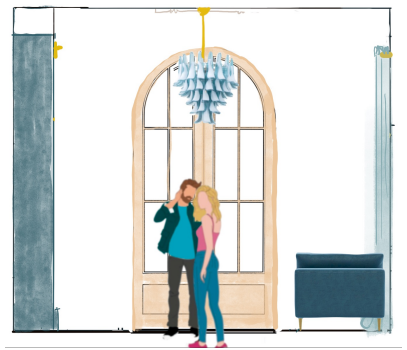






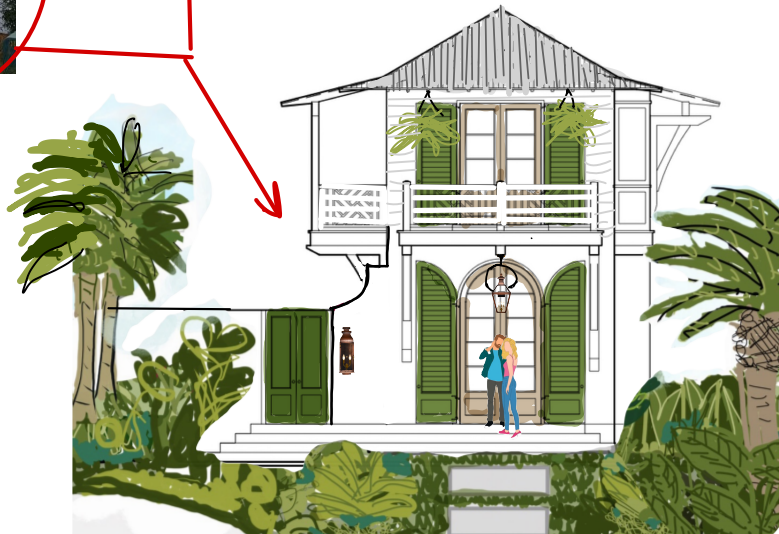
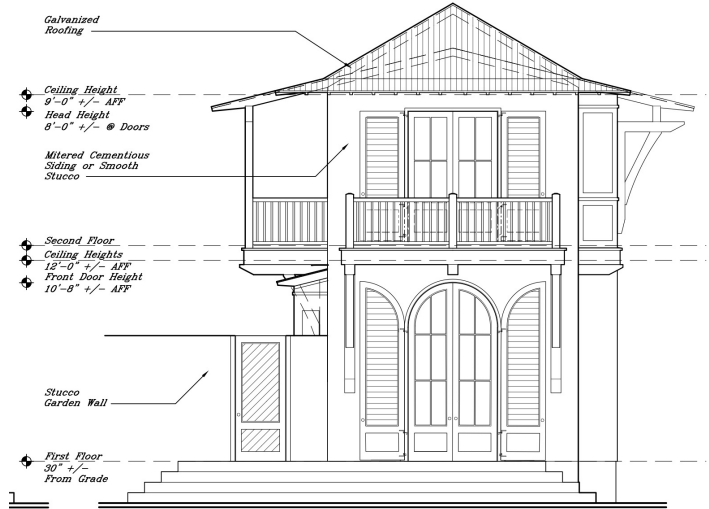








move courtyard wall  
forward and have it come  
off front wall with no seam





kitchen elevations + floor plan

